

# **eParapher RCP Client**

## **User's Guide**

---

# eParapher RCP Client: User's Guide

Version 0.1.0-SNAPSHOT

Copyright © 2008 Apache Software Foundation

Licensed to the Apache Software Foundation (ASF) under one or more contributor license agreements. See the NOTICE file distributed with this work for additional information regarding copyright ownership. The ASF licenses this file to you under the Apache License, Version 2.0 (the "License"); you may not use this file except in compliance with the License. You may obtain a copy of the License at

<http://www.apache.org/licenses/LICENSE-2.0>

Unless required by applicable law or agreed to in writing, software distributed under the License is distributed on an "AS IS" BASIS, WITHOUT WARRANTIES OR CONDITIONS OF ANY KIND, either express or implied. See the License for the specific language governing permissions and limitations under the License.

---

---

---

# Table of Contents

I. Getting started .....	1
1. Download and install .....	1
II. Tasks .....	2
1. Running eParapher .....	2
2. Updating eParapher .....	2
2.1. Inspecting the current configuration .....	2
2.2. Enabling, disabling and uninstalling features .....	3
3. Reporting a bug .....	3
III. Configuration .....	4
1. Eclipse Preferences .....	4
1.1. Help .....	4
1.2. Install/Update .....	5
1.3. Installed JREs .....	7
1.4. Network Connections .....	9
1.5. Text Editors .....	10
2. eParapher Preferences .....	15
2.1. Keystore settings .....	15
2.2. Password Policy for Keystore .....	15
2.3. Open Office Configuration .....	16
2.4. Digital signature default settings .....	16
IV. What's new .....	17
V. Release notes .....	18

---

# Chapter I. Getting started

## 1. Download and install

The latest version of eParapher can be downloaded from the eParapher Downloads page, at this address : <http://www.eparapher.com/download/index.html> [<http://www.eparapher.com/download/index.html>] .

### System requirements

- Mac OS X 10.4 or later, Windows, Linux
- Java Runtime Environment [<http://www.java.com/>] 5 or later

### Installing on Mac OS X

Follow this installation process:

- Step 1: Double-click the downloaded package to mount the Apache Directory Studio DMG.
- Step 2: Drag and drop the Apache Directory Studio application to your Applications folder.

### Installing on Linux

Follow this installation process:

- Step 1: Uncompress the Tar Gzip archive ('tar xzf eParapher-0.1.0-SNAPSHOT-linux-i386.tar.gz' for the i386 Linux version).
- Step 2: Move the eParapher folder to the location of your choice.

### Installing on Windows

Follow this installation process:

- Unzip the Zip archive.
- Run the installer and follow install instructions.

---

# Chapter II. Tasks

## 1. Running eParapher

### Mac OS X

If you followed the instructions on the "Download and install" page, simply double-click the eParapher application located in your Applications folder.

### Linux


After installing eParapher in a directory, you can start it by running the eParapher executable included with the release.

### Windows

If you followed the instructions on the "Download and install" page, simply click on the eParapher executable in the eParapher folder located in the All programs item of the Start menu.

## 2. Updating eParapher


To check to see whether there are updates for features of Apache Directory Studio (requires Internet access):


1. Click **Help > Software Updates >  Search for updates...** . This will contact eParapher Web site to discover what versions of those features are available. The potential upgrades are presented in on the next page.
2. Select the feature versions that you wish to upgrade, and click **Next** .
3. Carefully review the license agreements for the upgraded features. If the terms of all these licenses are acceptable, check "I accept the terms in the license agreements." Do not proceed to download the features if the license terms are not acceptable.
4. Feature versions can be digitally signed by the company that provides them. This allows you to verify more easily that the features and plug-ins that are about to be downloaded and installed are coming from a trusted supplier.

Click **Install** to allow the downloading and installing to proceed.

5. Once all the features and plug-ins have been downloaded successfully and their files installed into the product on the local computer, a new configuration that incorporates these features and plug-ins will be formulated. Click **Yes** when asked to exit and restart the Workbench for the changes to take effect.


### 2.1. Inspecting the current configuration

The **Help >  About ePARapher** dialog shows most of the important information about the features and plug-in configured in the product. To find out further detailed information about the current configuration:

1. Open the update configuration manager by clicking **Help > Software Updates >  Manage Configuration** . This opens the Product Configuration dialog.

2. In the Product Configuration dialog expand the root node (current configuration). The first tier of items are locations on the local computer where the files for features and plug-ins are stored. For a typical product, all features are installed in a single directory sub-tree. However, a feature that is installed as an extension of another product are usually located in a separate directory sub-tree.
3. Expand the location to see the feature versions installed there.
4. The nesting of the features indicates which child features are included in a given parent feature. Nested features act as a unit.
5. Select a feature version and click **Show Properties** to open the Properties dialog which presents more detailed information about the selected feature.
6. Click **Show Disabled Features** filter on the toolbar of the Product Configuration dialog. Any feature versions that are disabled are now shown (you might not have any). Disabled feature versions are ones that are installed on the local computer but excluded from the current configuration. At most one version of any given feature can be present in a given configuration; usually the ones with the lower version numbers will be in a disabled state.
7. In the Properties dialog of a feature, click **Status** to find out whether the selected feature is configured exactly as packaged. The status will show when a feature's plug-ins are present at different versions, or disabled due to missing prerequisite plug-ins that are expected to be supplied by some other feature.

## 2.2. Enabling, disabling and uninstalling features

You can browse and manage your configuration from the **Product Configuration dialog** . Open the **Product Configuration** dialog by clicking **Help > Software Updates >  Manage Configuration** .

1. **Disabling a feature** : select the feature and click **Disable** in the right pane of the dialog. This option is available only when the feature is currently enabled, and the feature is either an optional feature or a root feature (not included by other features).
2. **Enabling a feature** : First, ensure **Show Disabled Features** is turned on in the tool bar. Then, select a disabled optional or root feature and click **Enable** in the right pane of the dialog.
3. **Uninstalling a feature** : features that you have installed using the update manager can be uninstalled, provided they are already disabled, or that they are optional or root features. If the feature is disabled, make sure **Show Disabled Features** is turned on in the tool bar. Select the feature and click **Uninstall** in the right page of the dialog.

## 3. Reporting a bug

You can reach our issue tracking software called Trac using this address : <http://trac.eparapher.com/cgi-bin/trac.cgi/newticket> [<http://trac.eparapher.com/cgi-bin/trac.cgi/newticket>]

To report a bug:


1. Enter a short summary.
2. Select the type defect.
3. Fill in the full description with all the details you have.
4. Click the **Submit ticket** button to create the new issue.

---

# Chapter III. Configuration

## 1. Eclipse Preferences

The **Preferences** dialog is the dialog used to set user preferences. The Preferences dialog pages can be searched using the filter function. To filter by matching the page title, simply type the name of the page you are seeking and the available pages will be presented below. The filter also searches on keywords such as appearance and java. The history controls allow you to navigate through previously viewed pages. To step back or forward several pages at a time, click the drop down arrow and a list of the most recently viewed preference pages will appear.

The Preferences dialog can be found from the main workbench **Window** menu under **Window >  Preferences** . Preference pages contributed by plug-ins will be found in this dialog.

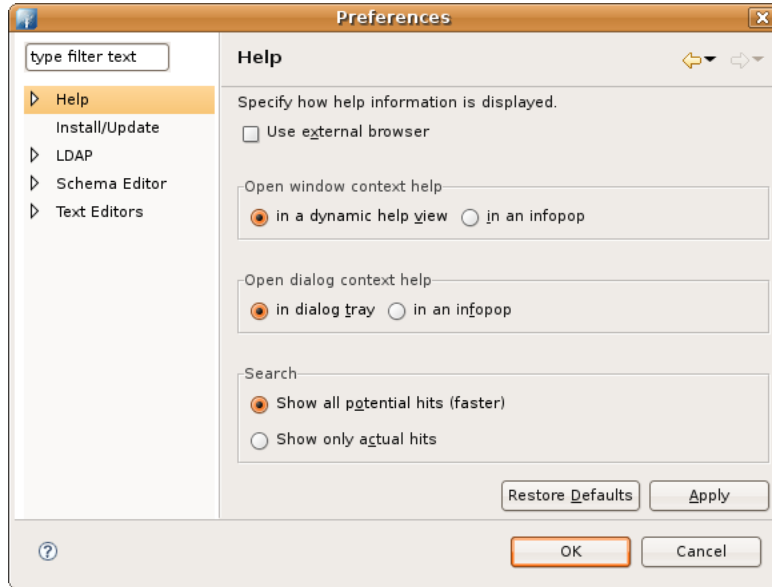
### 1.1. Help

On the **Help** preferences page, you can indicate how to display help information.

Option	Description	Default
Use external browsers	If embedded web browser is supported on your system, help window uses an embedded help browser to display help contents, whenever possible, and this option is available. Select it, to force help to use external browsers. Use "Web Browser" preference page to select browser to use.	Off
Open window context help	This option allows you to determine whether the window context help will be opened in a dynamic help view or in an infopop.	in a dynamic help view
Open dialog context help	This option allows you to determine whether the dialog context help will be opened in a dynamic help section of help view or in an infopop.	in dialog tray
Help view document open mode	This option allows you to determine whether the documents selected in the help view will be opened in place or in the editor area.	Open in place
Search	Determines whether potential hits should be shown while searching. Showing potential hits will increase search performance, at the cost of potential loss of accuracy.	Show all potential hits (faster)

Here is what the Help preferences page looks like:



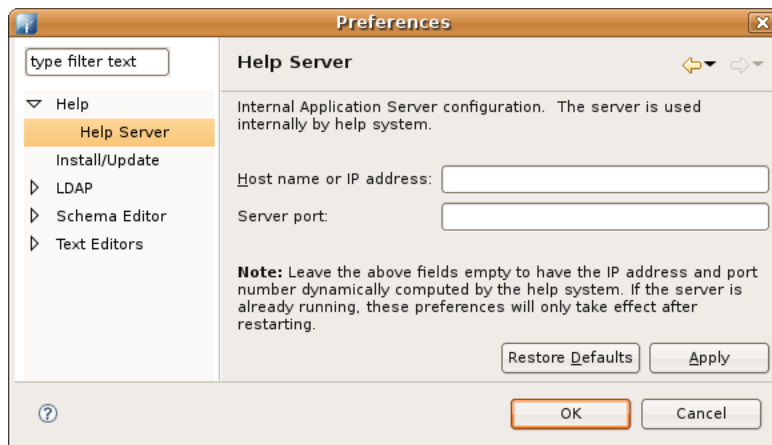


### 1.1.1. Help Server

Help system includes an internal server that serves help contents to the browser. Use the **Help > Help Server** preference page to change the interface and port that the servers uses. You should only change these settings if you experience problems and cannot view help with the default preferences.

Option	Description	Default
Host	Name or address of a local IP interface to be used by the server.	blank
Port	IP port for server to listen on. If no port is specified for the value, a port will be assigned by the operating system.	blank

Here is what the Help preferences page looks like:

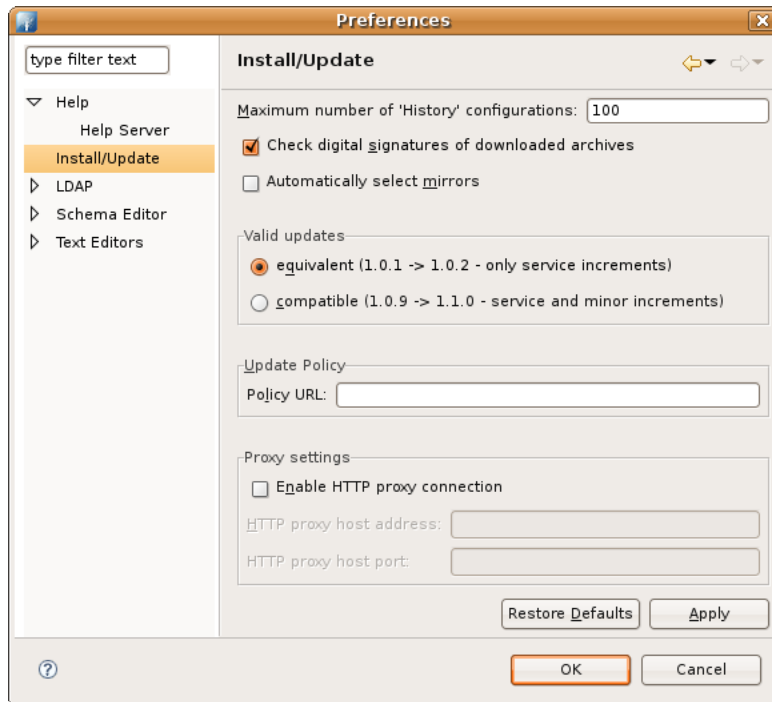


## 1.2. Install/Update

The following preferences can be changed on the Install/Update page:

Option	Description	Default
Maximum number of 'History' configurations	Maximum number of configurations you want maintained in the configuration history. These configurations are maintained to allow you to revert to a previous configuration of installed feature versions.	100
Check digital signatures of downloaded archives	This option will check for digital signatures of downloaded archives.	On
Valid updates	Assuming that feature versions use the form 'major.minor.service', you can select what update level you want to choose from: <ul style="list-style-type: none"> <li>• equivalent : Only service updates will be displayed.</li> <li>• compatible : Service updates and minor updates will be displayed.</li> </ul>	equivalent
Update Policy	The update policy URL that controls the redirection of update sites within an organization.	No policy
Proxy settings	Allows connection to the remote server from behind the firewall. When enabled, proxy host address (required) and port number (optional) can be specified.	No proxy

Here is what the Install/Update preferences page looks like:

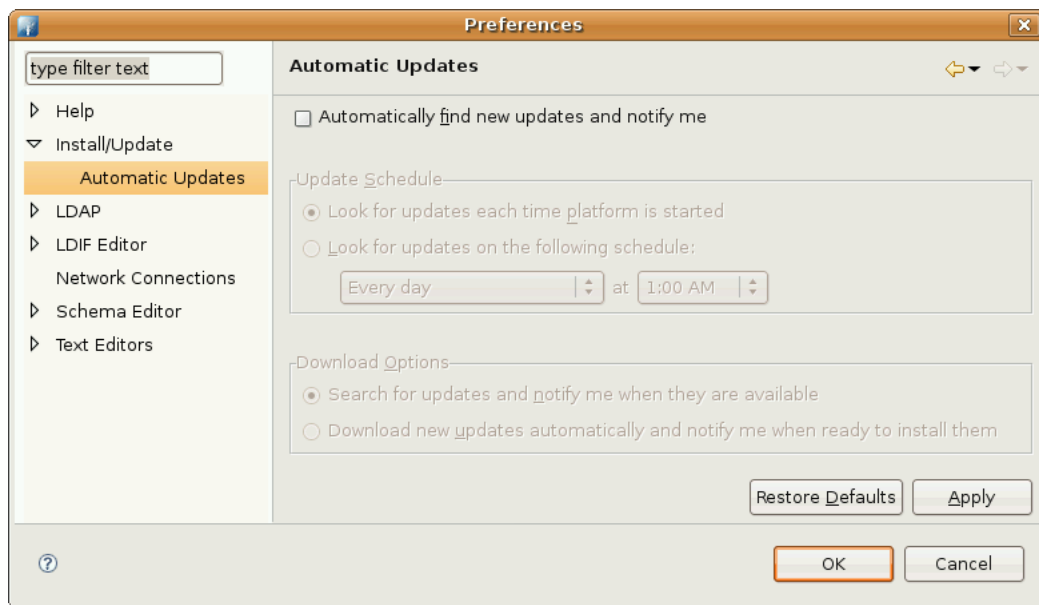


## 1.2.1. Automatic Updates

The following preferences can be changed on the Automatic Updates page:

Option	Description	Default
Automatically find new updates and notify me	When selected, Update manager will automatically search for update, as defined by the update schedule	Off
Update Schedule	Look for updates on each startup, or once a day or some day a week, at a predefined time.	on startup
Download Options	This option allows you to choose between having Eclipse search for updates and notifying you of them once they are available or having Eclipse automatically download new updates and asking you to install them.	on startup

Here is what the Automatic Updates preferences page looks like:



## 1.3. Installed JREs

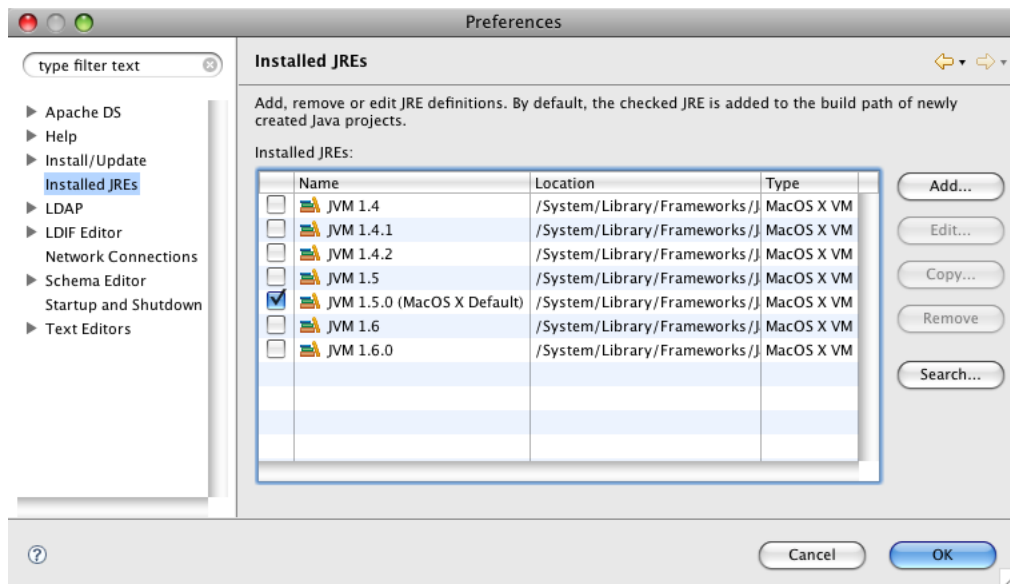
The following preferences can be changed on the Installed JREs page:

This page allows a new default JRE to be selected as well as adding new JRE installations.

Option	Description	Default
Installed JREs	The current listing of installed JREs, allowing you to select the one to act as the workspace default	
Add...	Adds a new JRE definition to the workbench. In the resulting dialog, specify the following: <ul style="list-style-type: none"> <li>JRE type: (select a VM type from the drop-down list)</li> </ul>	

Option	Description	Default
	<ul style="list-style-type: none"> <li>JRE name: Type a name for this JRE definition</li> <li>JRE home directory: Type or browse to select the root directory for this JRE installation</li> <li>Default VM arguments: Type the VM arguments to be used on the command line each time this JRE is used to run or debug a program</li> <li>Use the JRE system libraries list to manage the libraries associated with the JRE. These are the libraries that appear on the build path and default runtime boot path.                             <ul style="list-style-type: none"> <li>You can add, remove, and re-order the libraries</li> <li>You can specify a source attachment and javadoc location for each library. Multi-select to modify more than one library at once.</li> <li>Use the Restore Default button to revert to the JRE's default libraries</li> </ul> </li> </ul>	
Edit...	Allows you to edit the selected JRE.	
Copy...	Creates a copy of the selected JRE with the same attributes and a new name.	
Remove	Removes the selected JRE from the workbench.	
Search...	Automatically searches for JREs installed in the local file system and creates corresponding JRE definitions in the workspace.	

Here is what the Installed JREs preferences page looks like:

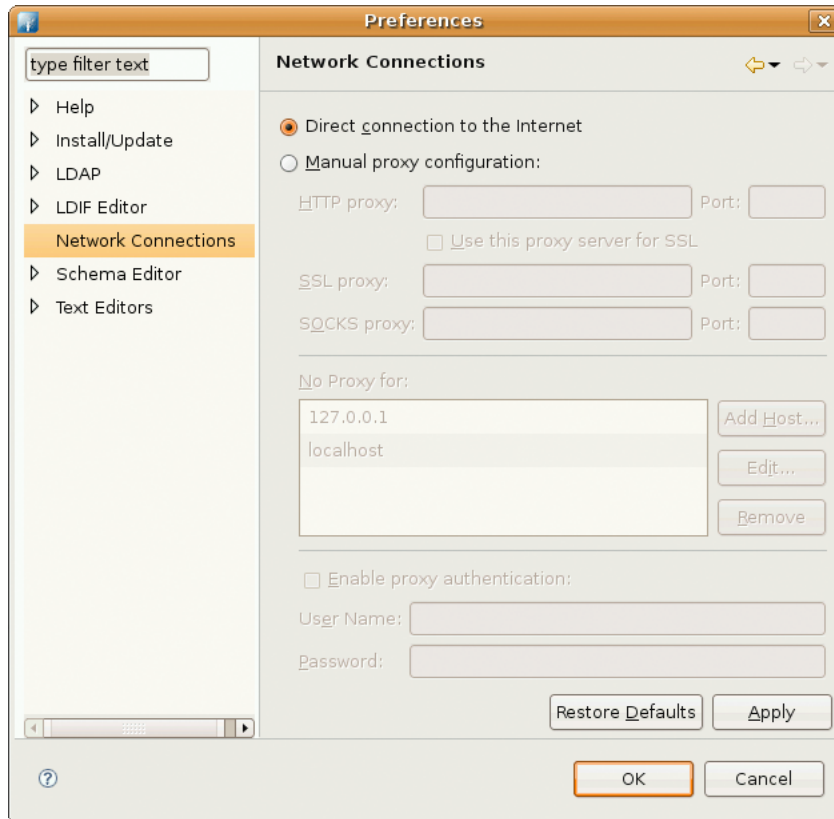


## 1.4. Network Connections

The following preferences can be changed on the Network Connections page:

Option	Description	Default
Direct connection to the Internet	Enable this option to have all connections to remote systems happen directly without involving a proxy server.	Enabled
Manual proxy configuration	Use this option if connections to remote systems should happen through a proxy server.	Disabled
HTTP Proxy	Use this option to specify the server and port that is to be used when making HTTP connections. If the port field is empty, the default port of 80 is used. If the "Use this proxy server for SSL" is checked, the HTTP proxy server is used for SSL connections as well.	
SSL Proxy	Use this option to specify the server and port that is to be used when making SSL connections. If the port field is empty, the default port of 443 is used.	
SOCKS Proxy	Use this option to specify the server and port that is to be used when making SOCKS connections. If the port field is empty, the default port of 1080 is used. [1]	
Non-proxied Hosts (No Proxy for)	Use this table to specify, either by name or pattern, which hosts should not use any proxy but instead should always be connected to directly.	
Proxy Authentication	Enable this option to specify a user name and password that is to be used when connecting to the proxy server.	Disabled

Here is what the Network Connections preferences page looks like:



1. The SOCKS proxy support in Java 1.4 had certain limitations. Due to these limitations, the setting of the SOCKS system properties is not performed when a 1.4 VM is used. The SOCKS proxy may still be used by some tooling when running on a 1.4 VM (e.g. CVS). However, users should use a 1.5 (or 5.0) VM if they require full SOCKS proxy support.

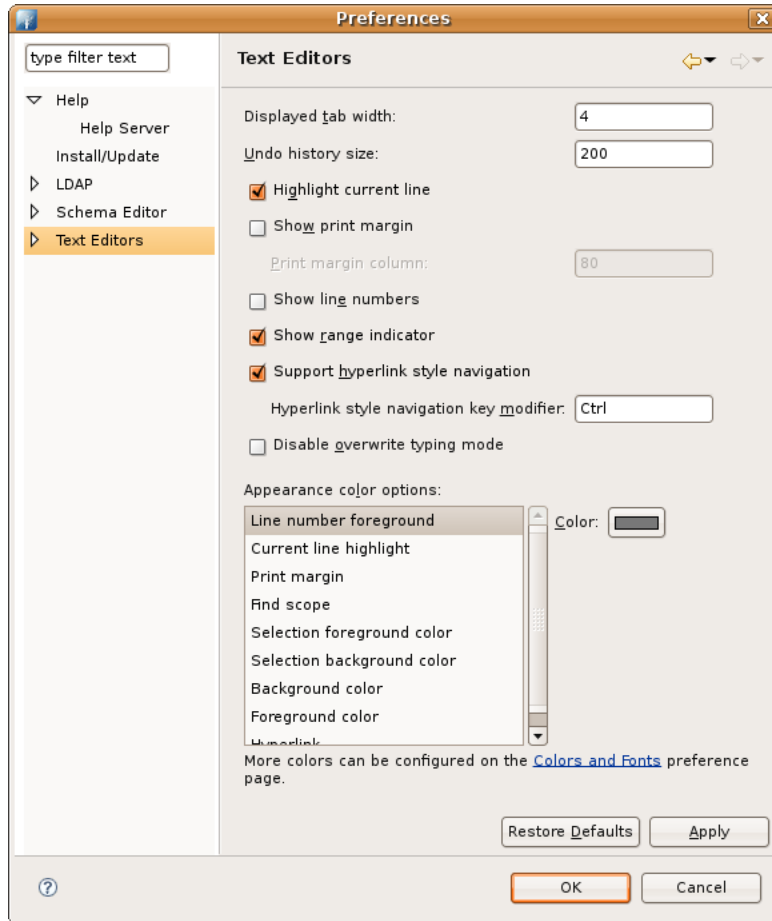
## 1.5. Text Editors

The following preferences can be changed on the **Text Editors** page.

Option	Description	Default
Displayed tab width	This option allows you to set the displayed tab width for the text editor.	4
Undo history size	This option allows you to undo the history size for the text editor.	25
Highlight current line	This option controls whether or the current line is highlighted or not.	On
Show print margin	This option controls whether the print margin is visible or not.	Off
Show line numbers	This option controls whether or not line numbers are shown on the left side of the text editor.	Off
Show range indicators	This option controls whether or not range indicators are shown in the text editor.	On
Support hyperlink style navigation	This option controls whether or not hyperlink style navigation is supported.	On

Option	Description	Default
Hyperlink style navigation key modifier	This option sets the hyperlink style navigation key modifier.	Ctrl
Disable overwrite typing mode	This option controls whether the overwrite typing mode is enabled or disabled.	Off
Appearance color options	This option controls various appearance colors.	-

Here is what the Help preferences page looks like:



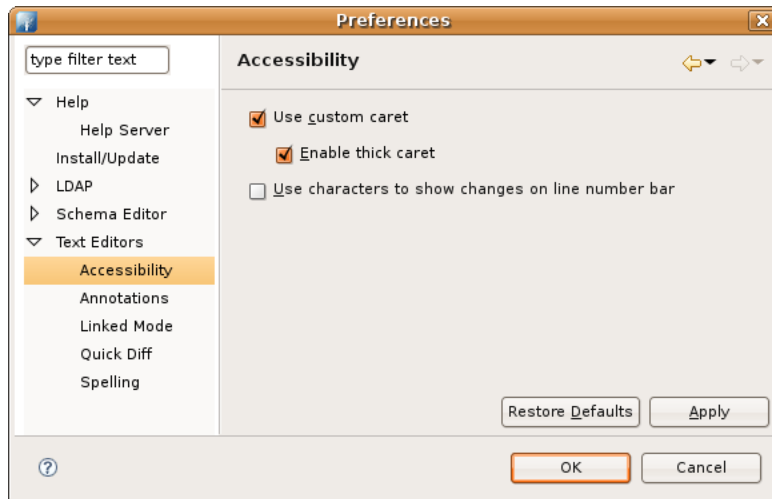
### 1.5.1. Accessibility

The following preferences can be changed on the **Text Editors > Accessibility** page.

Option	Description	Default
Use custom caret	This option replaces the original caret with a custom caret and shows a different caret for Overwrite and Insert mode.	On
Enable thick caret	This option replaces the original caret with a more visible, thicker caret.	On
		Off

Option	Description	Default
Use characters to show changes on line number bar	Quick Diff shows the changes in a vertical ruler using colors. Color blind persons can enable this option to show the differences with different characters in the line number ruler.	

Here is what the Accessibility preferences page looks like:



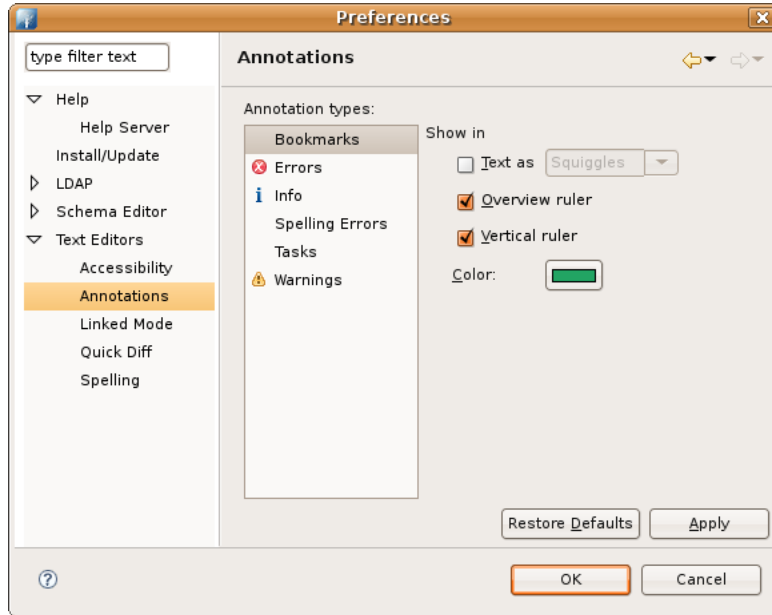
## 1.5.2. Annotations

The following preferences can be changed on the **Text Editors > Annotations** preference page.

Option	Description
Show in Text as	This option controls whether the selected annotation type is shown in the text. The corresponding text will be underlined with squiggles or highlighted.
Show in Overview ruler	This option controls whether the overview ruler on the right side of the text editor is shown.
Show in Vertical ruler	This option controls whether the selected annotation type is shown in the vertical ruler.
Color	This option controls the color for the selected annotation type.

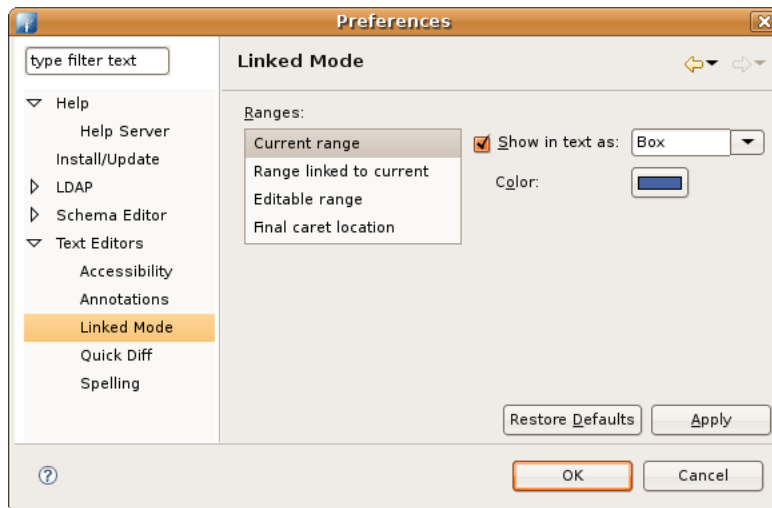
Here is what the Annotations preferences page looks like:





### 1.5.3. Linked Mode

Here is what the Linked Mode preferences page looks like:



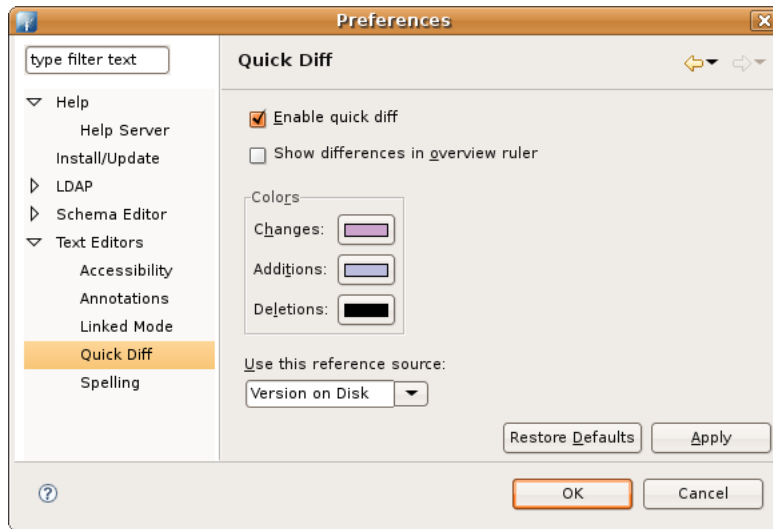
### 1.5.4. Quick Diff

The following preferences can be changed on the **Text Editors > Quick Diff** preference page.

Option	Description	Default
Enable quick diff	This option will enable or disable the quick diff option.	On
Show differences in overview ruler	This option will show differences in the overview ruler.	Off
Colors - Changes	This option controls the color of changes.	-
Colors - Additions	This option controls the color of additions.	-

Option	Description	Default
Colors - Deletions	This option controls the color of deletions.	-
Use this reference source	This option sets which reference to use as the base for generating quick diff comparisons. Options are: <ul style="list-style-type: none"> <li>Version on Disk: Current file is compared against the last saved version on disk.</li> <li>Latest CVS Revision: Current file is compared against the latest CVS revision for the file.</li> </ul>	Version on Disk

Here is what the Quick Diff preferences page looks like:



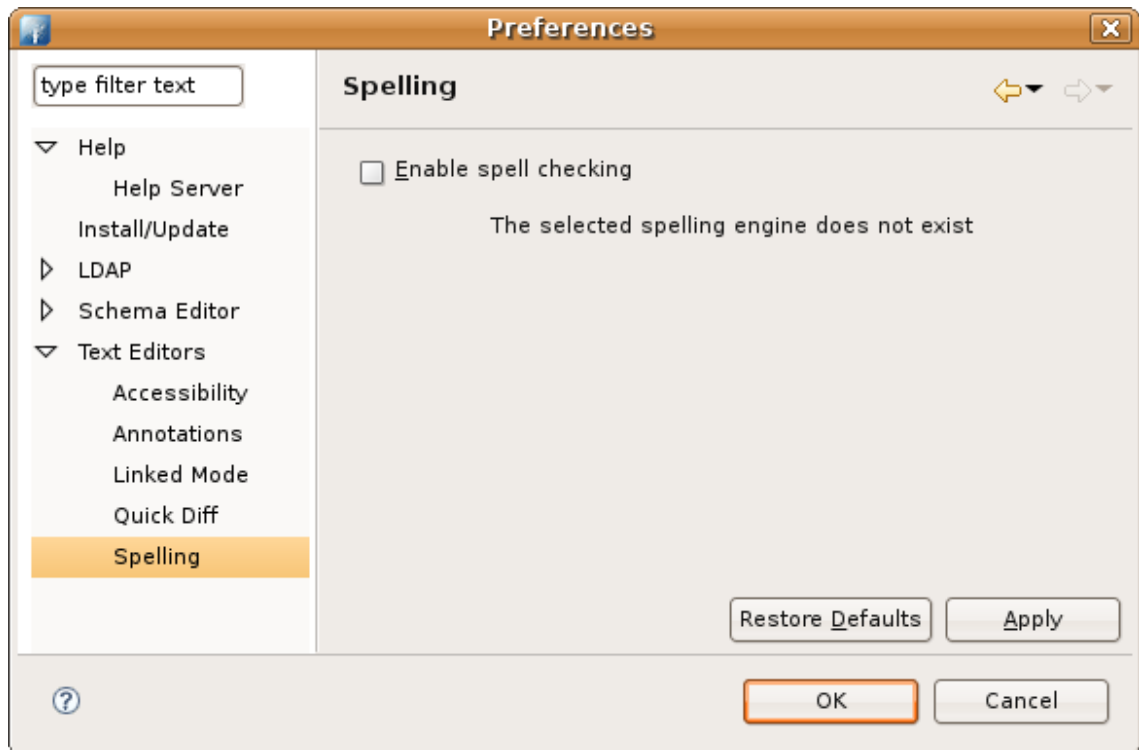
## 1.5.5. Spelling

The following preferences can be changed on the **Text Editors > Spelling** preference page.

Option	Description	Default
Enable spell checking	This option enables spell checking.	Off
Ignore words with digits	This option ignores words with digits when performing spell checking.	Off
Ignore mixed case words	This option ignores mixed case words when performing spell checking.	Off
Ignore sentence capitalization	This option ignores sentence capitalization when performing spell checking.	Off
Ignore upper case words	This option ignores upper case words when performing spell checking.	Off
Ignore internet addresses	This option ignores internet addresses when performing spell checking.	Off
Platform dictionary	This option selects a platform dictionary to use.	-
User defined dictionary	This option selects a User defined dictionary to use.	-

Option	Description	Default
Maximum number of correction proposals	This option limits the possible corrections displayed to the given value.	20
Make dictionary available to content assist	This option allows content assist to use the dictionary when constructing its choices.	20

Here is what the Spelling preferences page looks like:



## 2. eParapher Preferences

The **Preferences** dialog is the dialog used to set user preferences. The Preferences dialog pages can be searched using the filter function. To filter by matching the page title, simply type the name of the page you are seeking and the available pages will be presented below. The filter also searches on keywords such as appearance and java. The history controls allow you to navigate through previously viewed pages. To step back or forward several pages at a time, click the drop down arrow and a list of the most recently viewed preference pages will appear.

The Preferences dialog can be found from the main workbench **Window** menu under **Window > Preferences** . Preference pages contributed by plug-ins will be found in this dialog.

### 2.1. Keystore settings

TODO

### 2.2. Password Policy for Keystore

TODO

## 2.3. Open Office Configuration

OpenOffice help eParapher to convert your documents to PDF or PDF/A. **TODO**

## 2.4. Digital signature default settings

Configure your digital signature default parameters here. **TODO**

---

# Chapter IV. What's new

## What's new in 0.0.2

Coming soon

---

# Chapter V. Release notes

## Apache Directory Studio 1.3.0 RC1 - (2008, October 13th)

### *Improvement*

- [DIRSTUDIO-255] - Run in background should be configurable so one could set it to true by default

### *Task*

- [DIRSTUDIO-376] - Move to the latest Eclipse 3.4 dependencies
- [DIRSTUDIO-375] - Move each plugin IDs in a plugin.properties file

## Apache Directory Studio 1.2.0 - (2008, august 18th)

### *Bug*

- [DIRSTUDIO-347] - Keybinding conflict for CTRL+Q
- [DIRSTUDIO-330] - CoreException raised in editor when opening a \*.txt file
- [DIRSTUDIO-325] - Keybinding conflicts occurred. They may interfere with normal accelerator operation.
- [DIRSTUDIO-342] - Relax the parser for the \*.schema files
- [DIRSTUDIO-266] - OpenLDAP schema files parser fails when DESC contains an empty string "

### *Improvement*

- [DIRSTUDIO-337] - Add Save and Print actions in the toolbar of the RCP application
- [DIRSTUDIO-295] - Add a console for errors

### *New Feature*

- [DIRSTUDIO-321] - Need to be able to set SOCKS proxy in the RCP version

### *Task*

- [DIRSTUDIO-339] - Add the 'org.eclipse.ui.carbon' Eclipse plugin to the Mac OS X distribution
- [DIRSTUDIO-338] - Update Eclipse dependencies to the latest Eclipse version (3.3.2)

## Apache Directory Studio 1.1.0 - (2008, march 31st)

### *Task*

- [DIRSTUDIO-280] - Remove remaining unwanted contributions from Eclipse

## **Apache Directory Studio 1.0.0 (2007, september 3rd) : initial release**

Includes :

- Apache Directory Studio Apache DS Configuration 1.0.0
- Apache Directory Studio LDAP Browser 1.0.0
- Apache Directory Studio LDIF Editor 1.0.0
- Apache Directory Studio RCP 1.0.0
- Apache Directory Studio Schema Editor 1.0.0